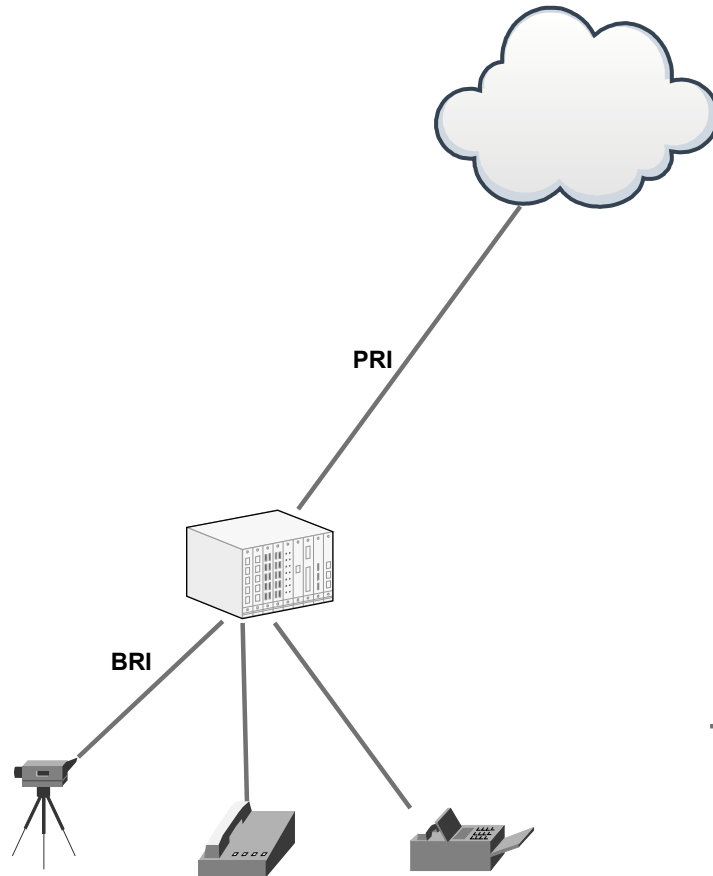


Migrating a legacy PABX to “all IP”

Making it less expensive, faster, simpler and lower risk

Patapsco Communications Ltd

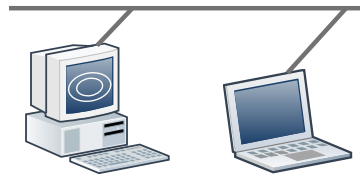


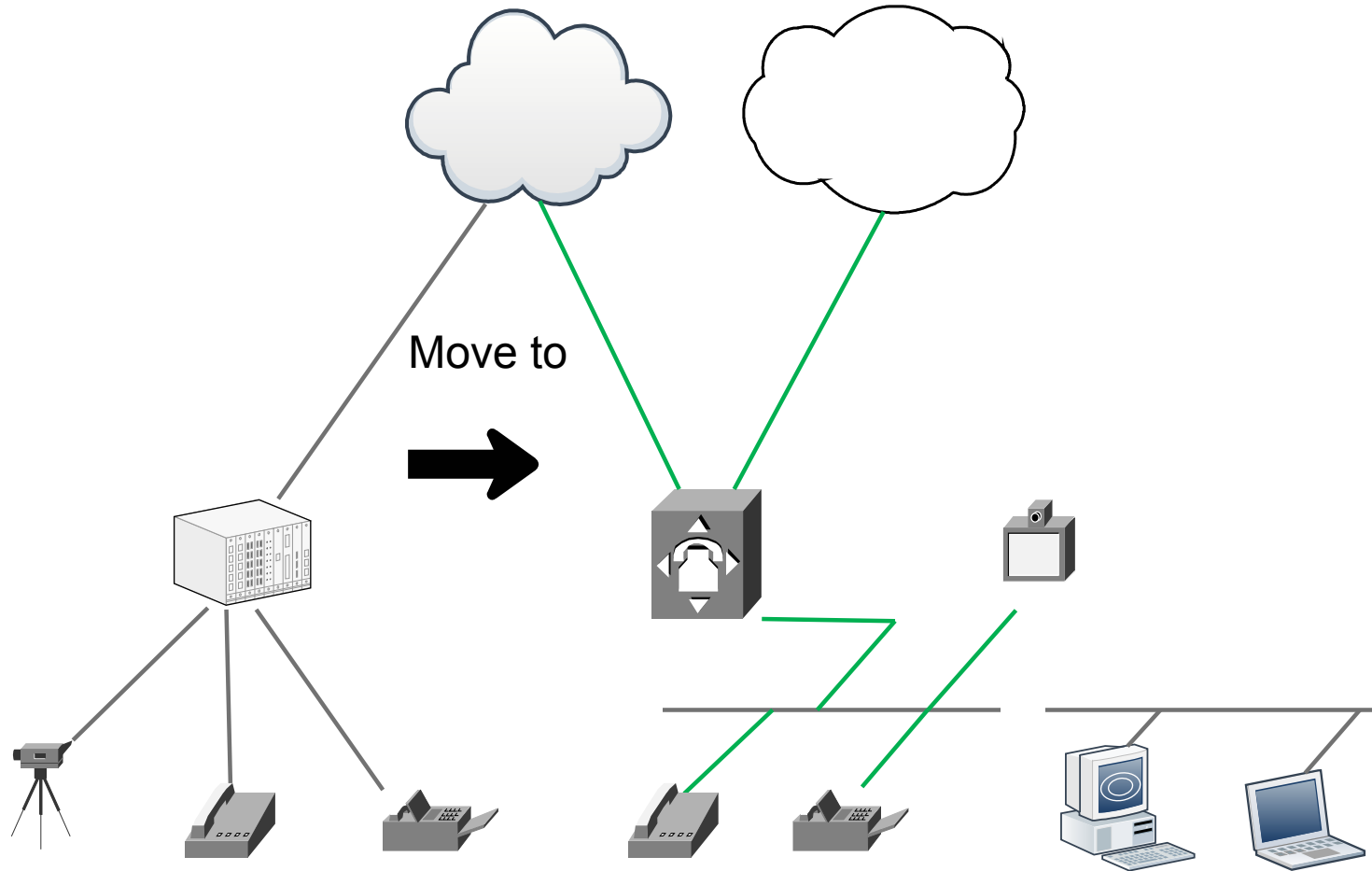
Separate voice and data networks

- Expensive

Numbering plans and routing embedded in old PABX

- Complex
- Difficult to maintain
- Limited and costly to expand/change





Migration considerations:

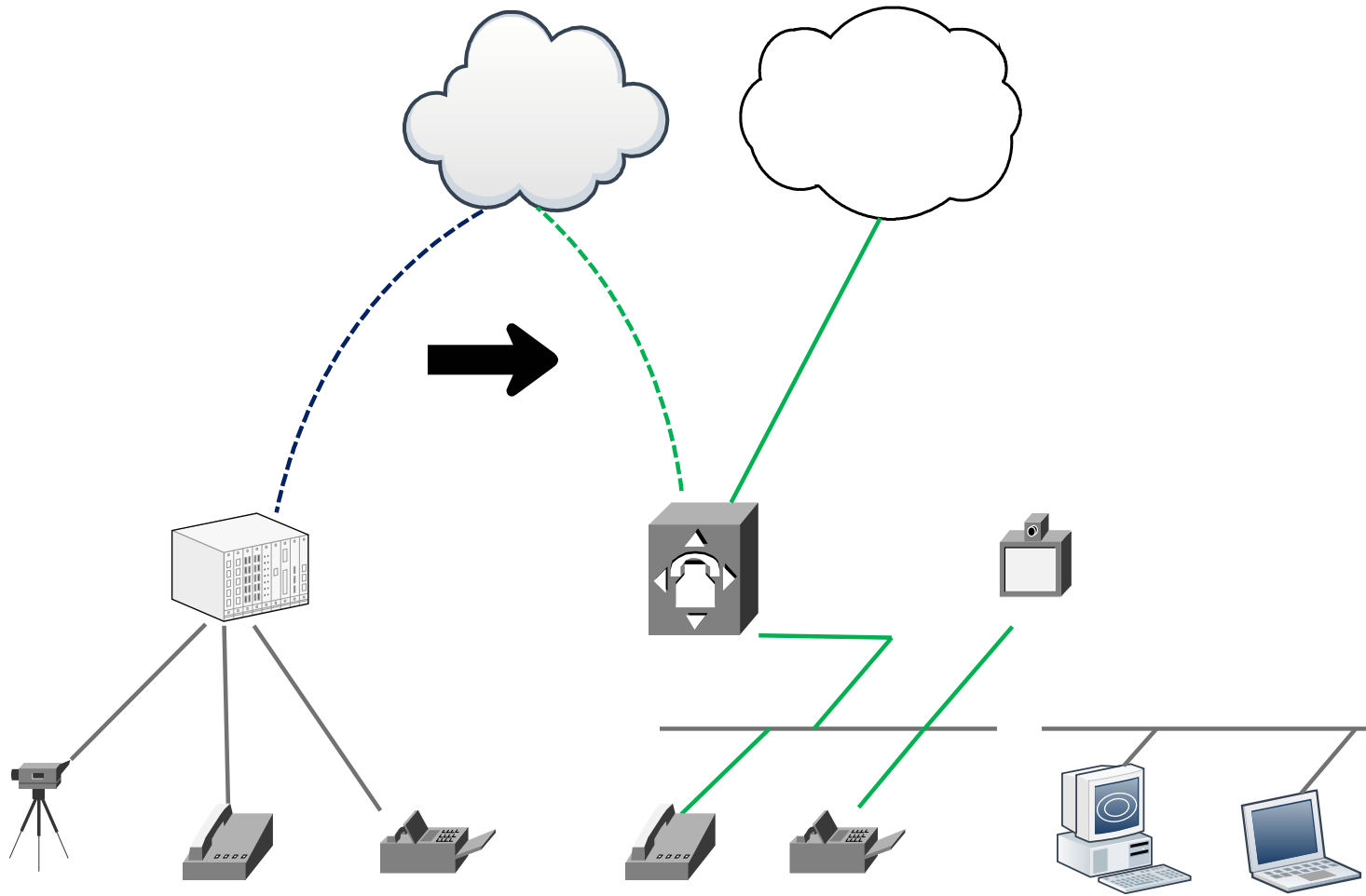
- Risk
- Involvement of legacy PABX maintainer
 - Motivation & commitment
 - Costs
 - Co-ordination
- Maintaining inter-connectivity during migration
- Timescales
- Minimising disruption
- Ongoing service quality

There are typically three transition options:

- 1. Hot swap
- 2. Staged migration
- 3. The “Liberator” migration

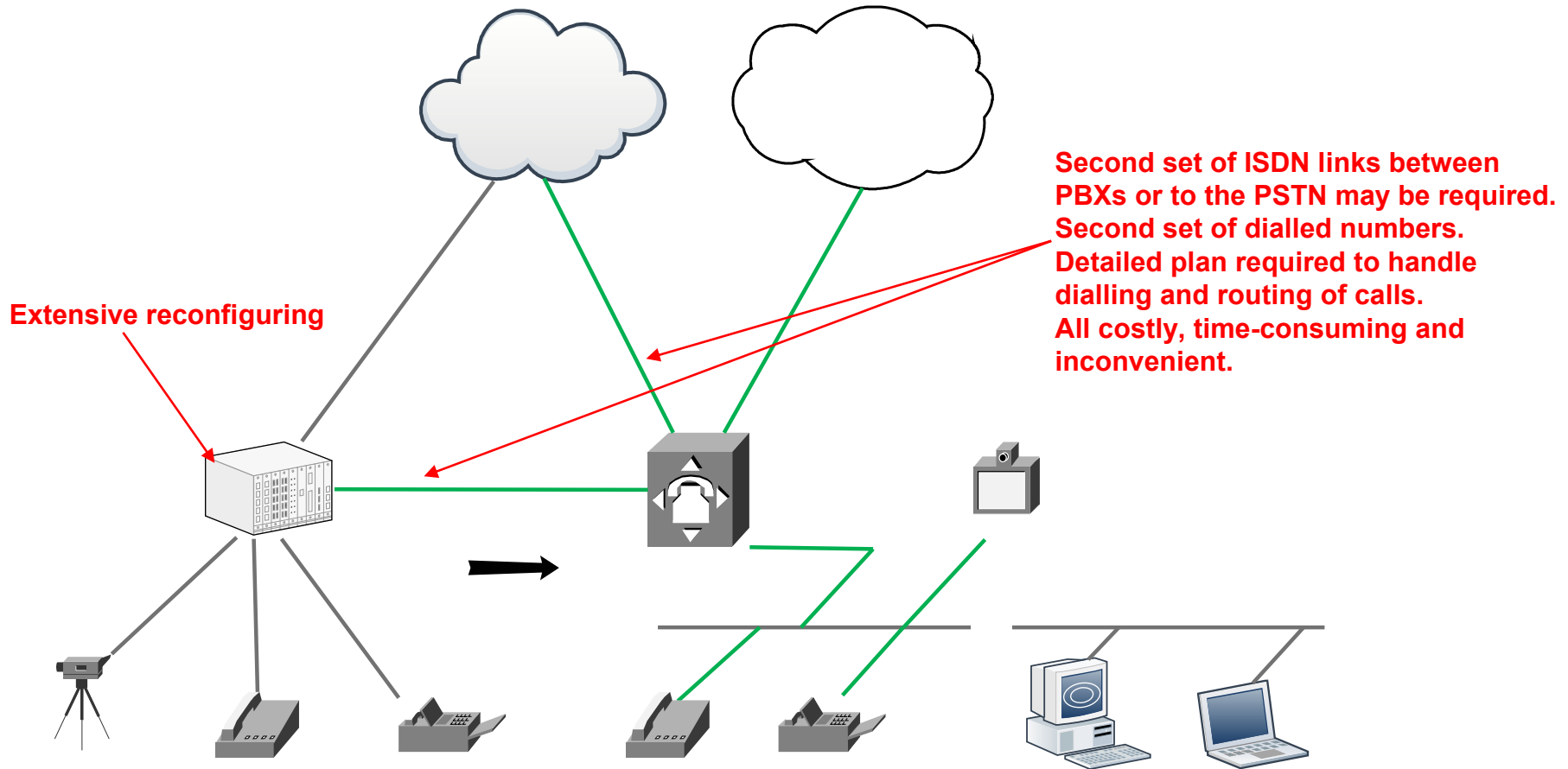
1. Hot swap

- Transfer the ISDN connection from the PABX directly to the IP-PBX
- Suits smaller enterprises (<20 users)
- Limited primary/secondary routing tables and numbering requirements
- Lowest cost option
- Often carried out over evening/weekend but can be risky



Staged migration

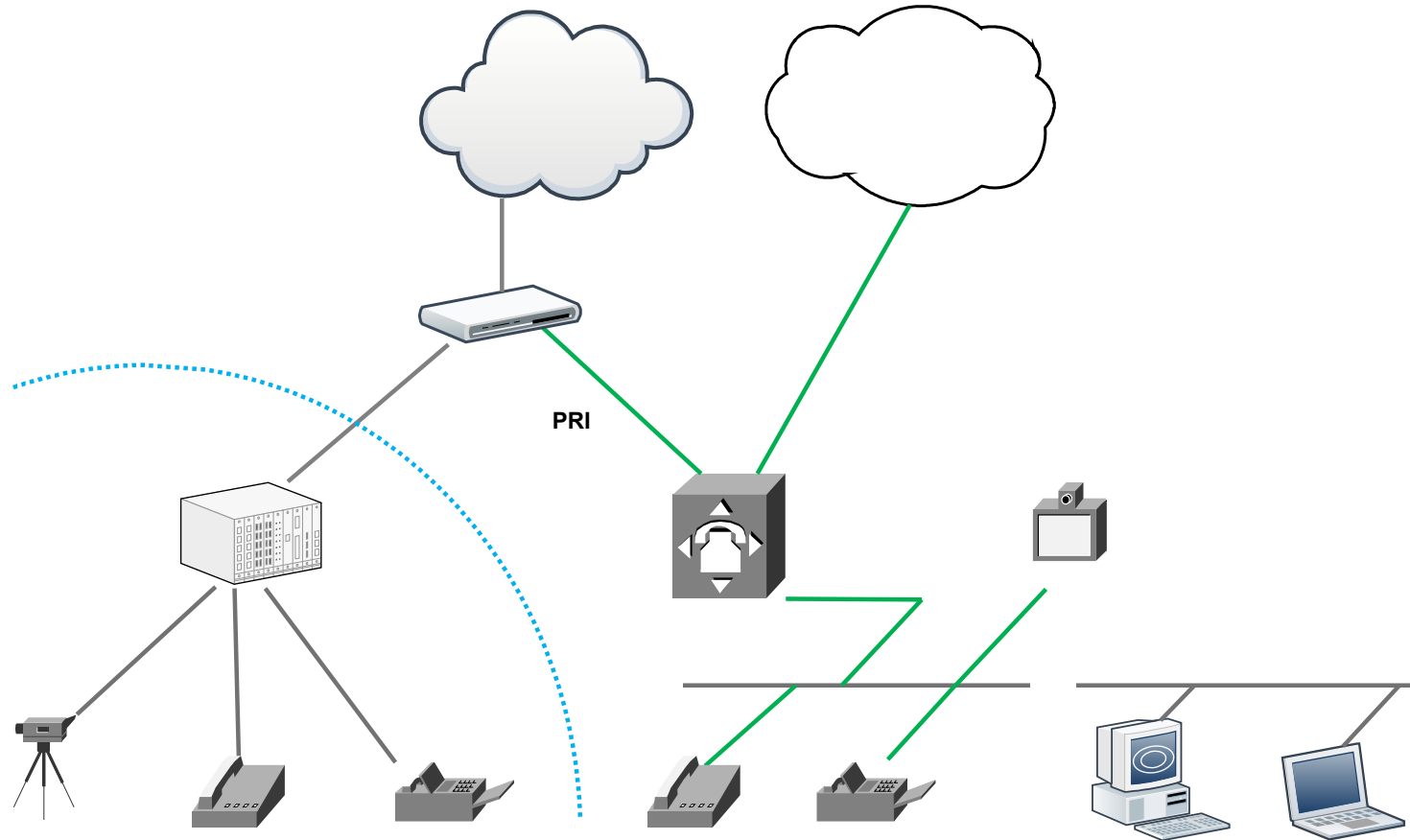
- Typically for medium/larger enterprises
- Migration may take weeks or months
- Most costly approach as either requires:
 - additional ISDN connections or
 - additional interfaces for PABX and IP-PBX
- Needs careful and detailed planning
- Large involvement of legacy PABX staff
 - cost
 - motivation
 - timescales
- High risk with large chance of delays and “issues”



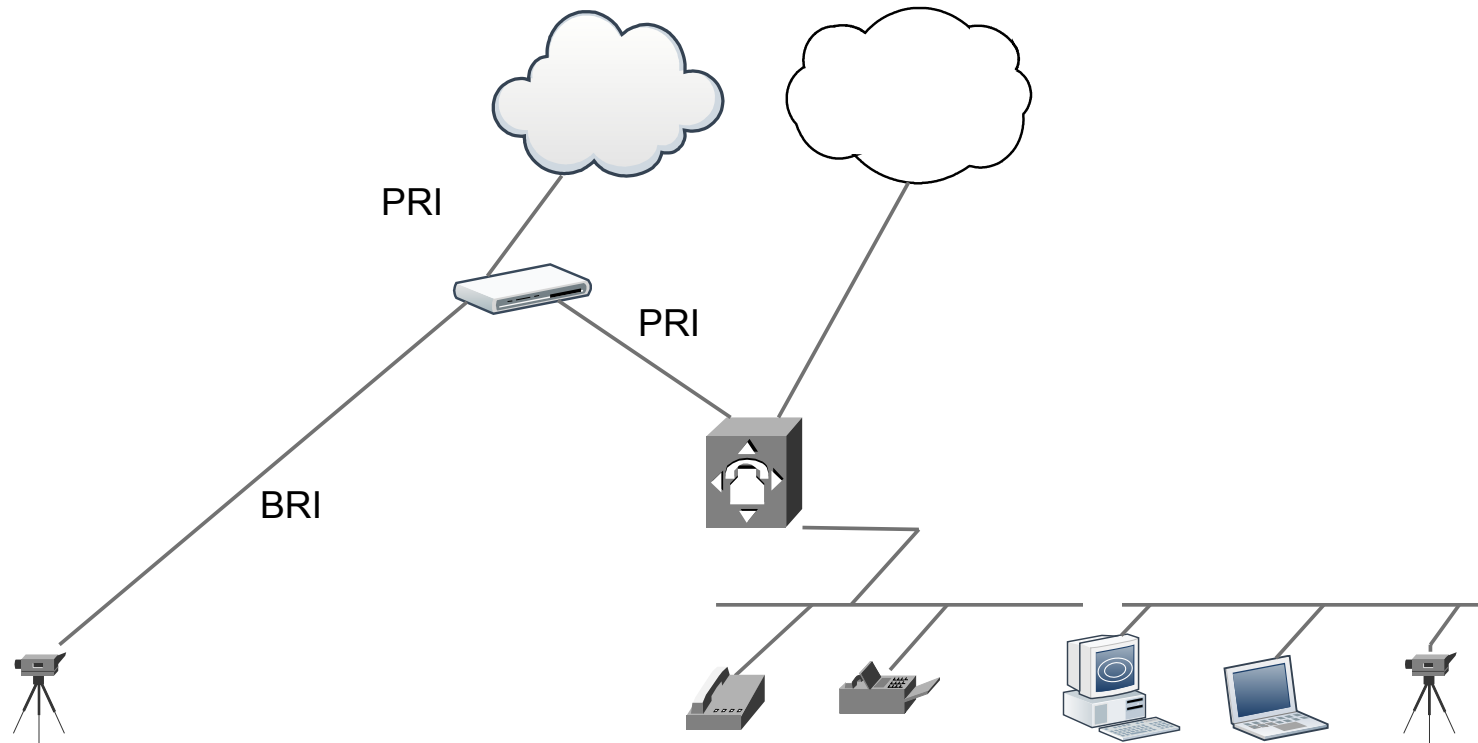
Requires strong coordination of skilled PABX engineer and new system engineer to make system work well

The “Liberator” migration

- A flexible lower cost approach
- Liberator manages almost all the rerouting
- Minimises the costly, inconvenient and risky reprogramming of the existing PABX
- No unnecessary additional interface cards
- No new ISDN connections or numbering plan required
- Reconfigurations can be achieved remotely
- Continues to support the high quality ISDN BRI video conferencing facility



- Liberator provides fast and flexible routing of calls to minimise changes on the old PABX



- Liberator supports ISDN BRI Video Conferencing systems, not typically well-handled by IP-PABXs

Why choose the “Liberator” migration

- Less expensive
 - Minimises the costly reprogramming of the existing PABX
 - No extra PRI links needed
 - Can all be achieved remotely
- Faster
 - Rerouting handled by the Liberator
- Simpler
 - Significantly reduce reliance on skilled PABX engineer
- Lower risk
 - Minimise changes to numbering plan and rerouting that may introduce errors or issues
- More flexible
 - Number conversion to help with number changes and re-routing

Patapsco can provide you and your team with valuable tools, and importantly a key differentiator in your sales, planning and installation processes

Contact details

- Website: www.patapsco.co.uk
 - Brochures
 - Technical specs
 - Support Q&A
 - Applications

- Sales Contact Terry Preston
 - terry@patapsco.co.uk
 - +44 1428 752 955